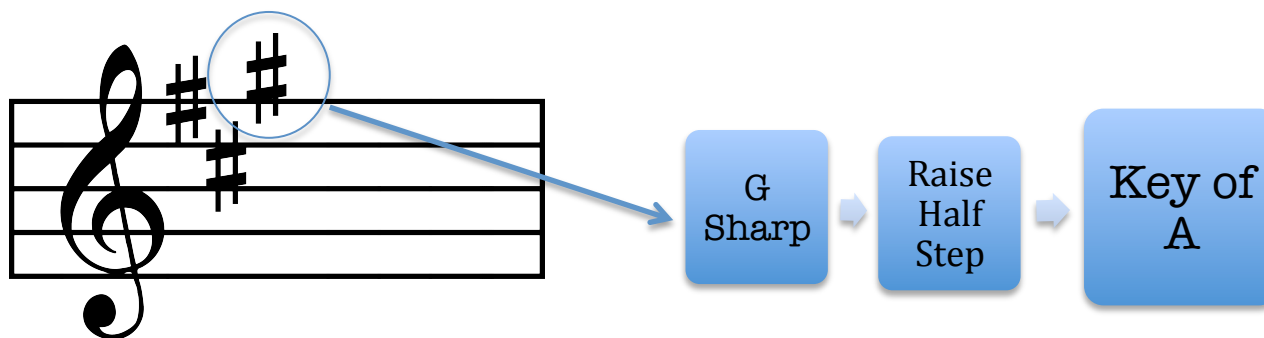


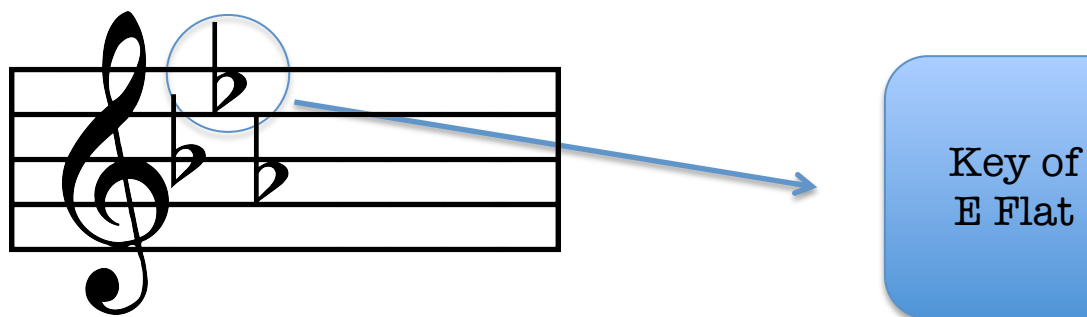


Piano Gal Theory Cheat Sheet Key Signature

Short Cut for Finding Key Signature for Sharps:
Name the **last sharp** and raise half step or semitone up.

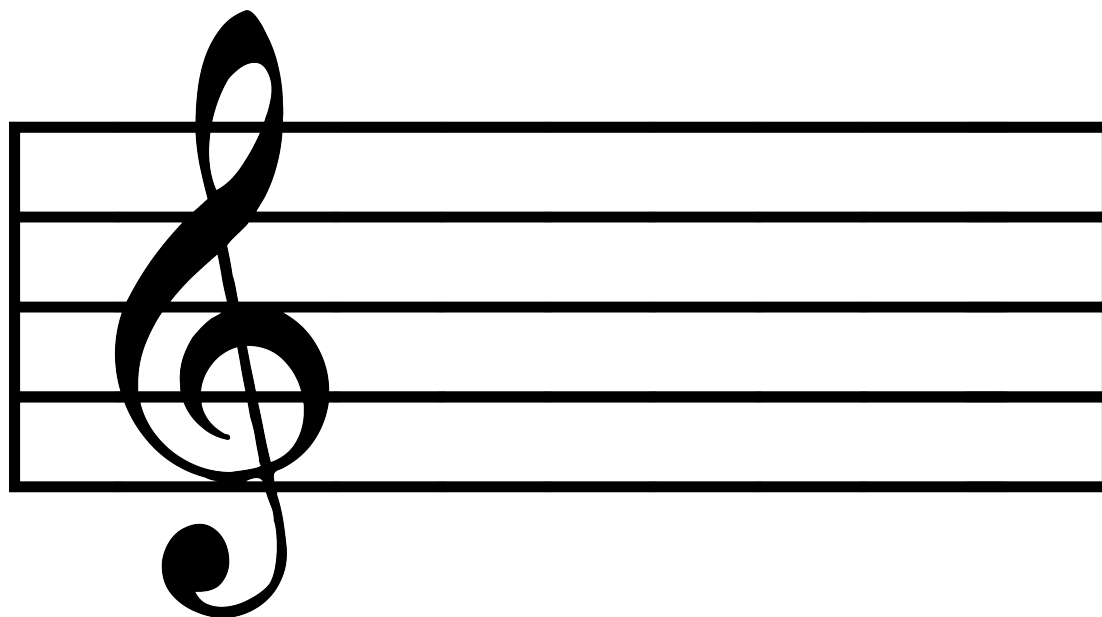


Short Cut for Finding Key Signature for Flats:
Name the **second to last flat** in the Key Signature





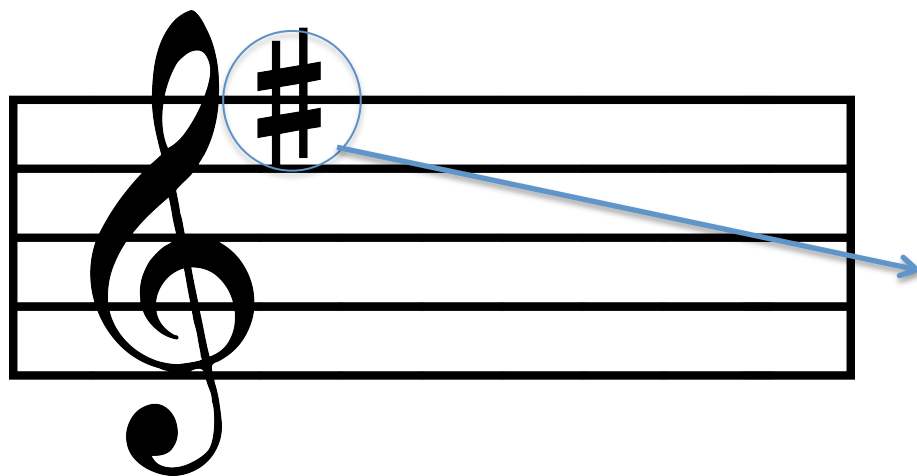
Piano Gal Theory
Cheat Sheet
Key Signature



No Sharps or Flats = **C Major**



Piano Gal Theory Cheat Sheet Key Signature



F
Sharp



Raise
Half
Step



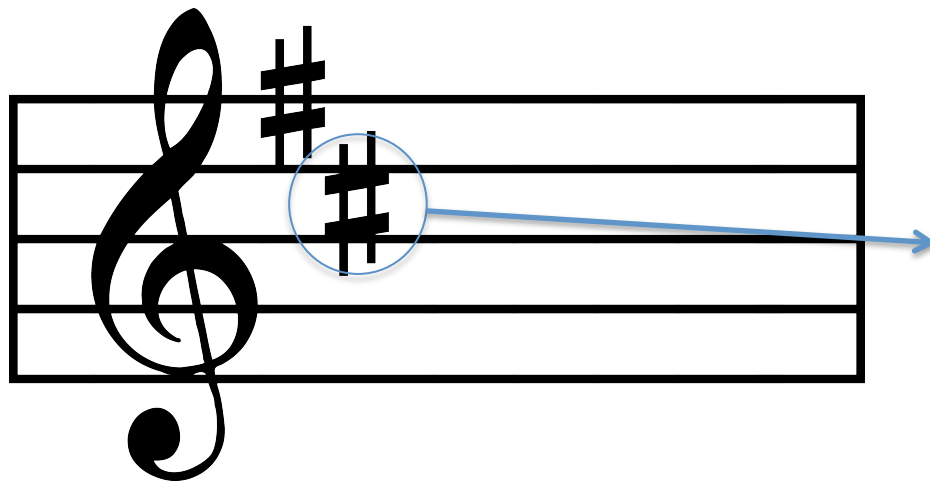
Key of G

One Sharp = **G Major**

Another Hint: **G**oofy Sharp



Piano Gal Theory
Cheat Sheet
Key Signature



C
Sharp

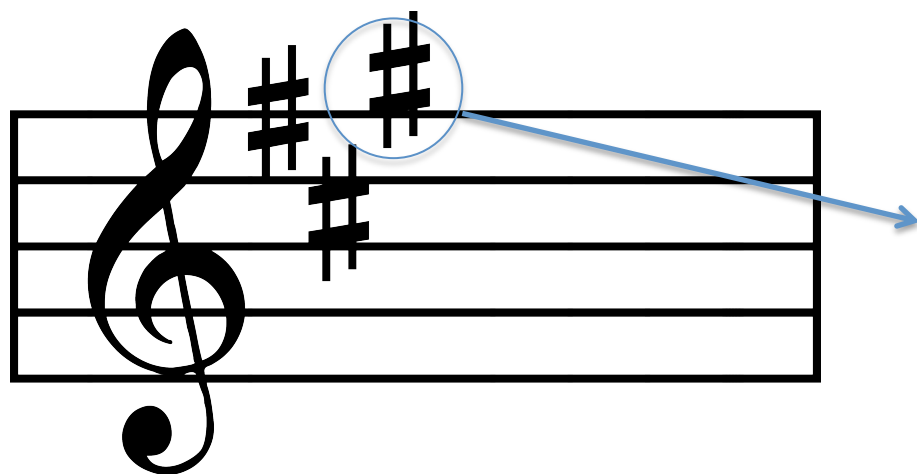
Raise
Half
Step

Key of D

Two Sharps = **D Major**



Piano Gal Theory Cheat Sheet Key Signature



G
Sharp



Raise
Half
Step

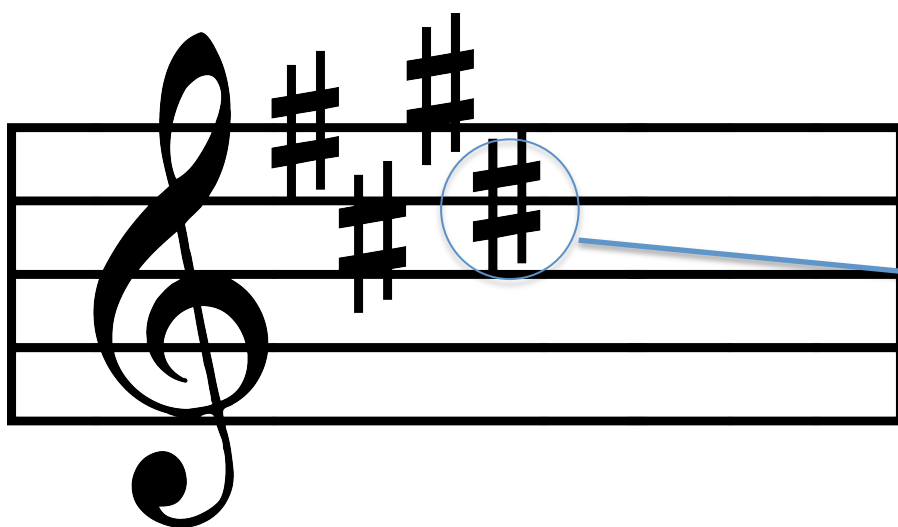


Key of A

Three Sharps = **A Major**



Piano Gal Theory Cheat Sheet Key Signature



D
Sharp

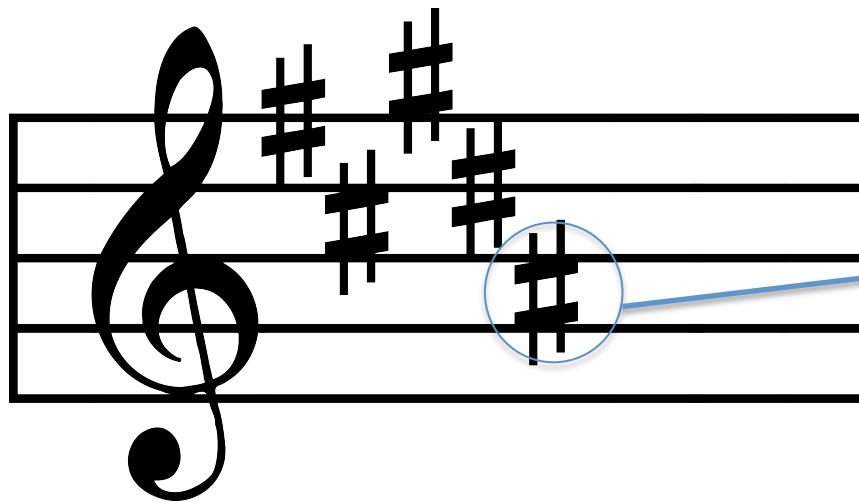
Raise
Half
Step

Key of E

Four Sharps = **E Major**



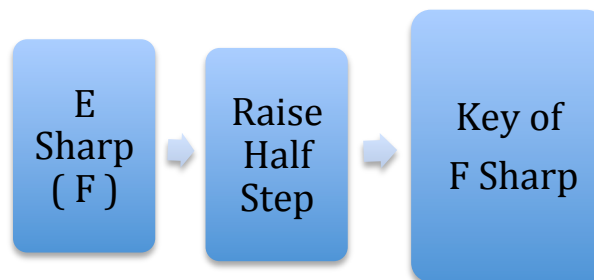
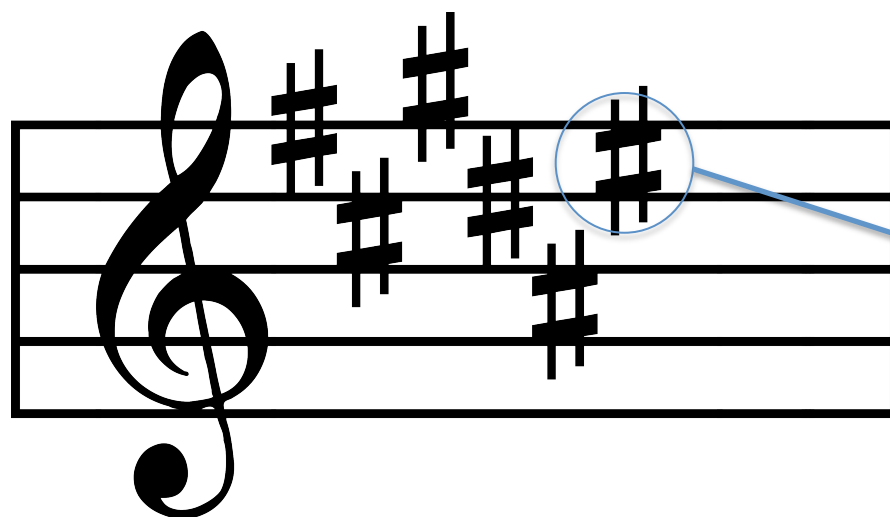
Piano Gal Theory
Cheat Sheet
Key Signature



Five Sharps = **B Major**



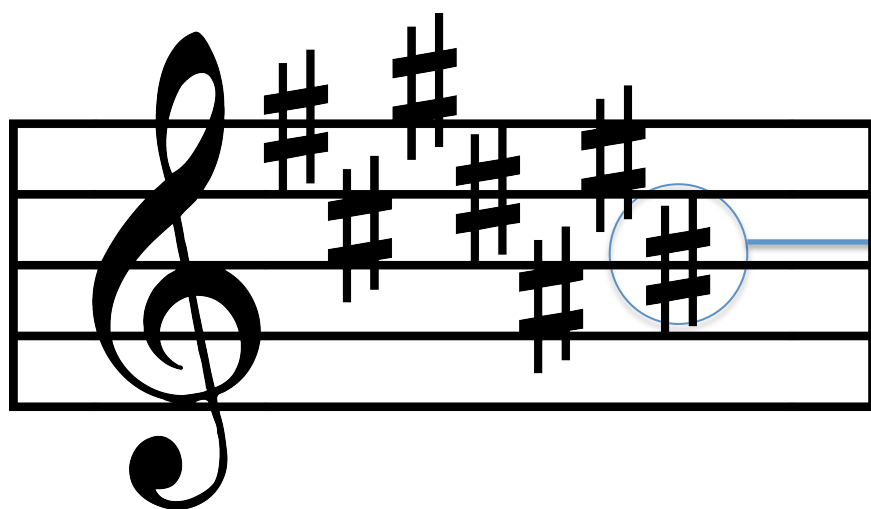
Piano Gal Theory Cheat Sheet Key Signature



Six Sharps = **F Sharp Major**



Piano Gal Theory
Cheat Sheet
Key Signature



B
Sharp
(C)

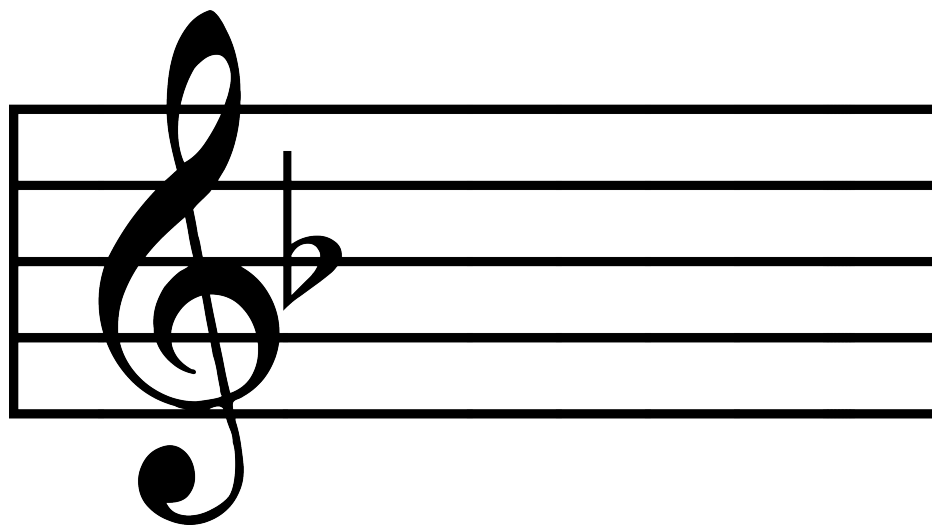
Raise
Half
Step

Key of
C Sharp

Seven Sharps = **C Sharp Major**



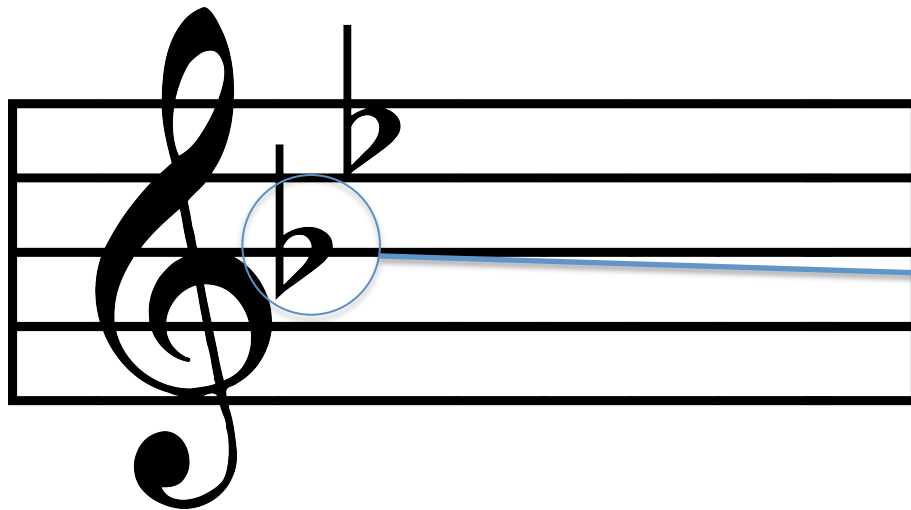
Piano Gal Theory
Cheat Sheet
Key Signature



One Flat = **F Major**
Hint: Funny Flat



Piano Gal Theory
Cheat Sheet
Key Signature

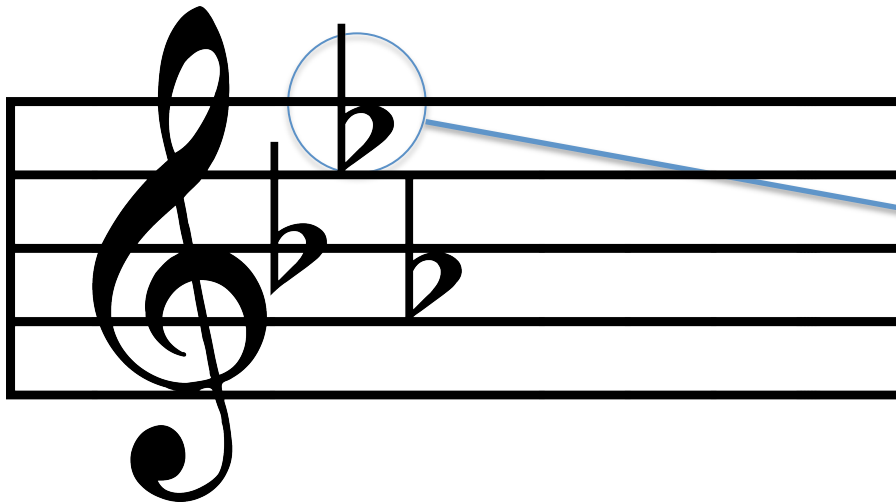


Key of
B Flat

Two Flats = **B Flat Major**



Piano Gal Theory
Cheat Sheet
Key Signature

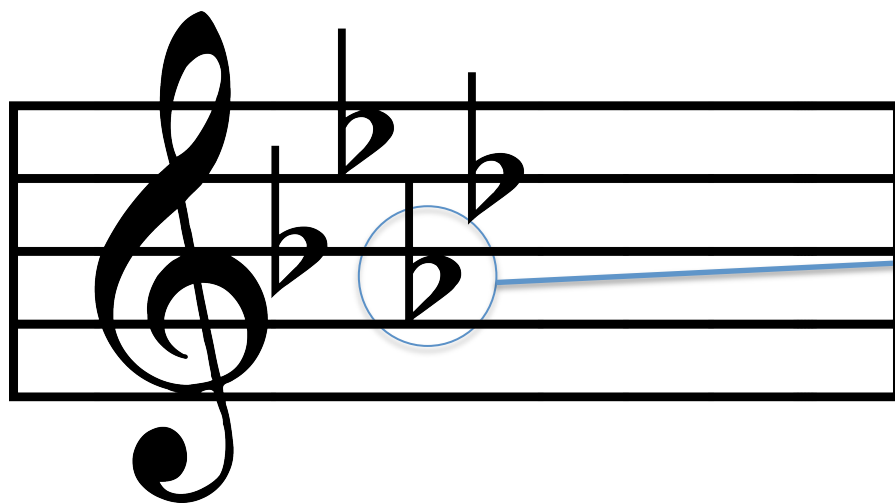


Key of
E Flat

Three Flats = **E Flat Major**



Piano Gal Theory
Cheat Sheet
Key Signature

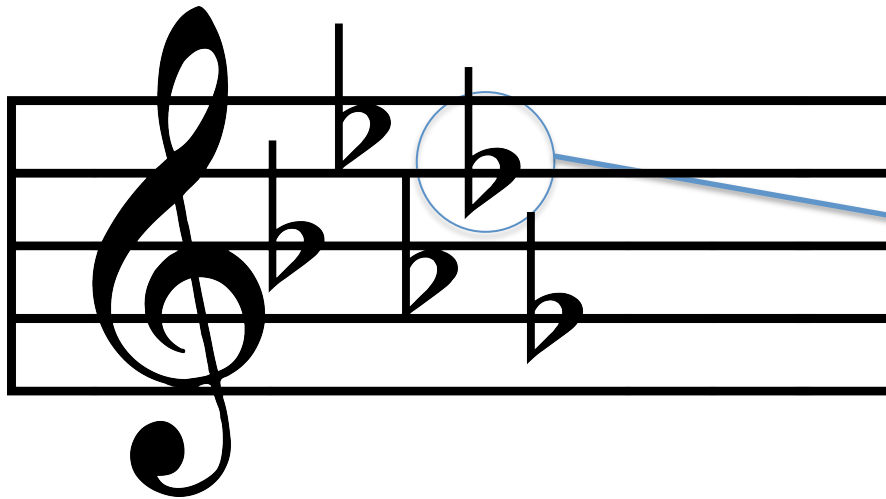


Key of
A Flat

Four Flats = **A Flat Major**



Piano Gal Theory
Cheat Sheet
Key Signature

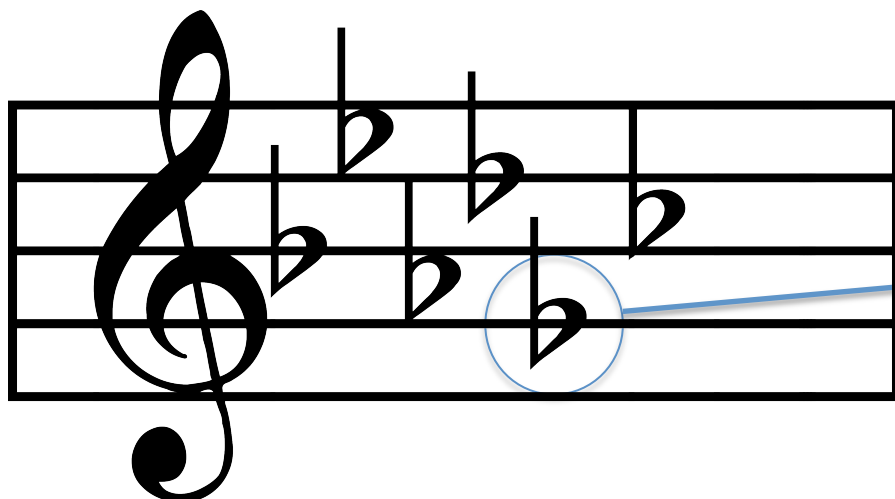


Key of
D Flat

Five Flats = **D Flat Major**



Piano Gal Theory
Cheat Sheet
Key Signature

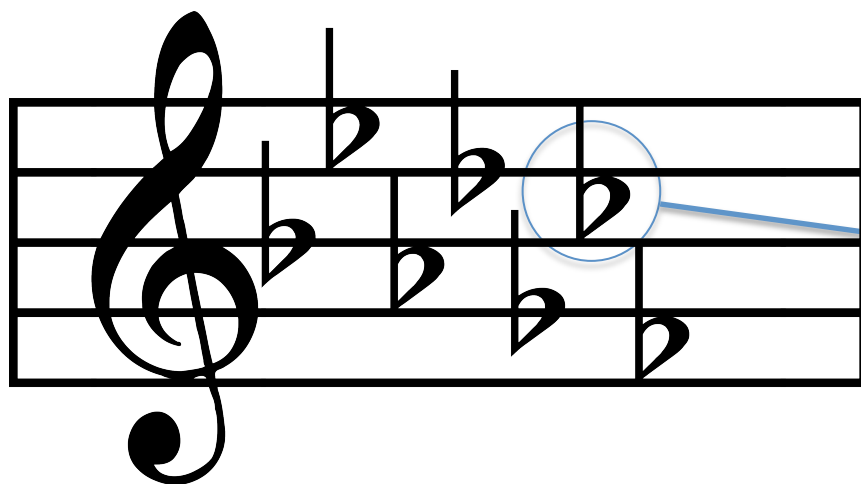


Key of
G Flat

Six Flats = **G Flat Major**



Piano Gal Theory
Cheat Sheet
Key Signature



Key of
C Flat

Seven Flats = **C Flat Major**